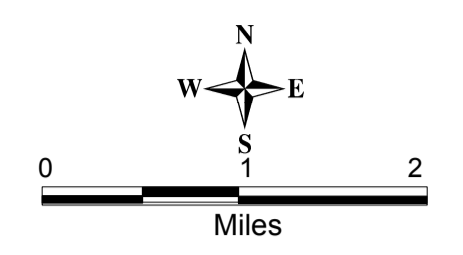
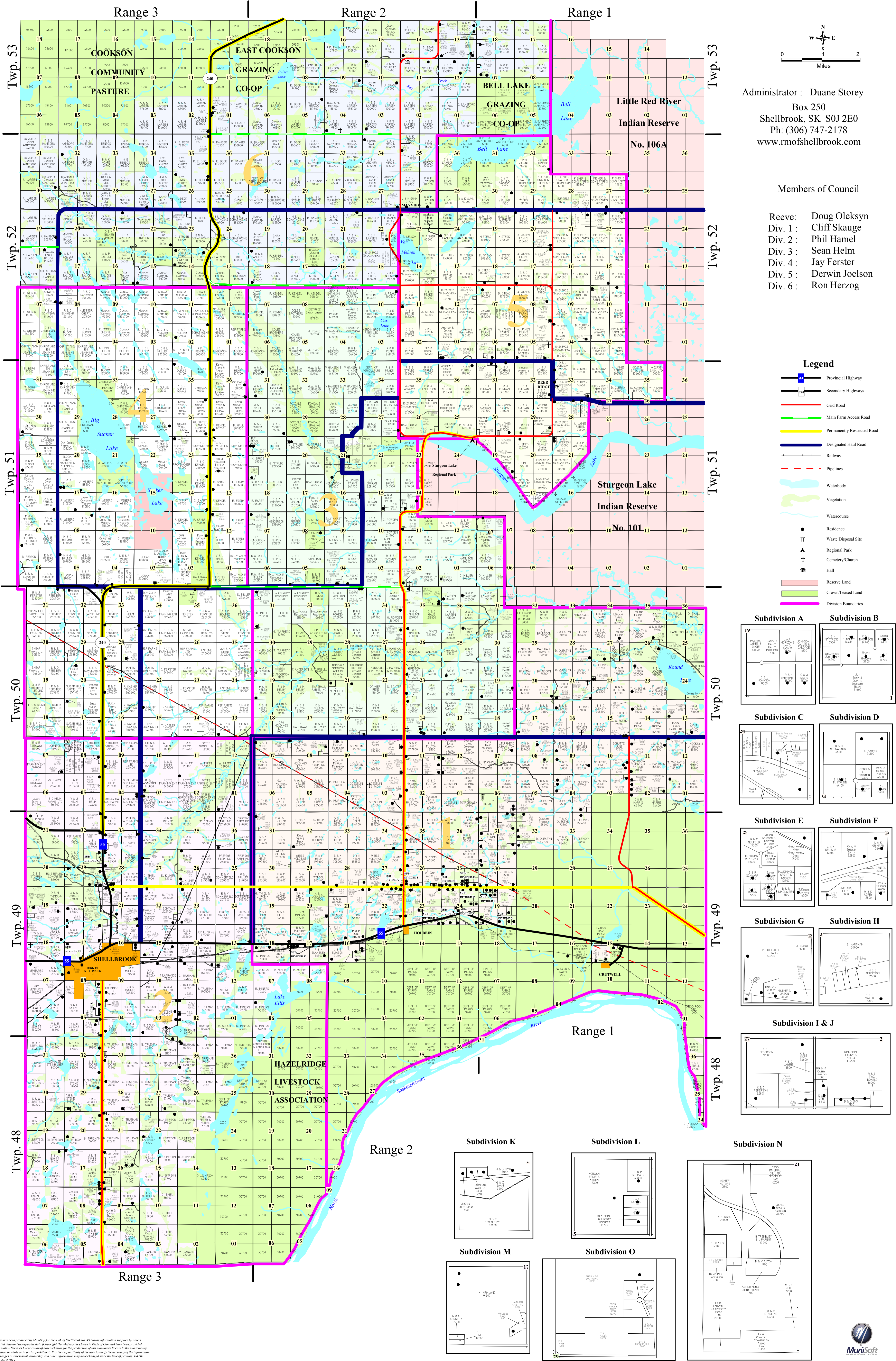


RURAL MUNICIPALITY OF SHELLBROOK No. 493

WEST OF 3rd MERIDIAN



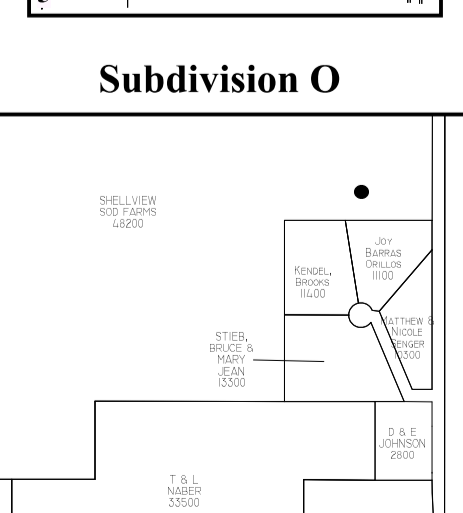
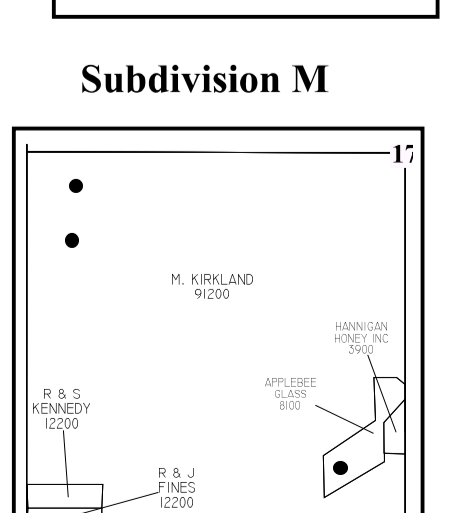
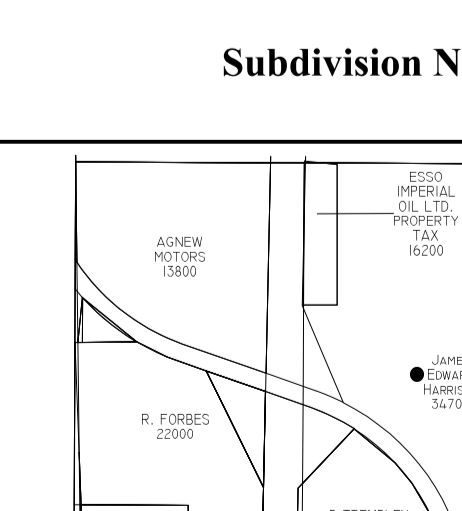
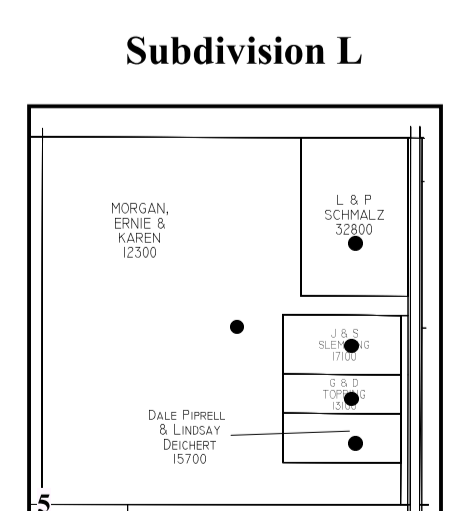
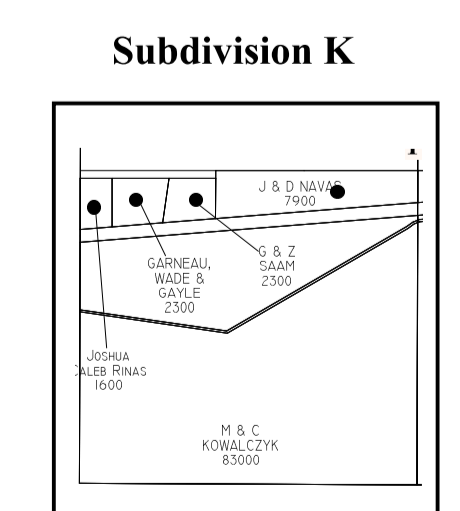
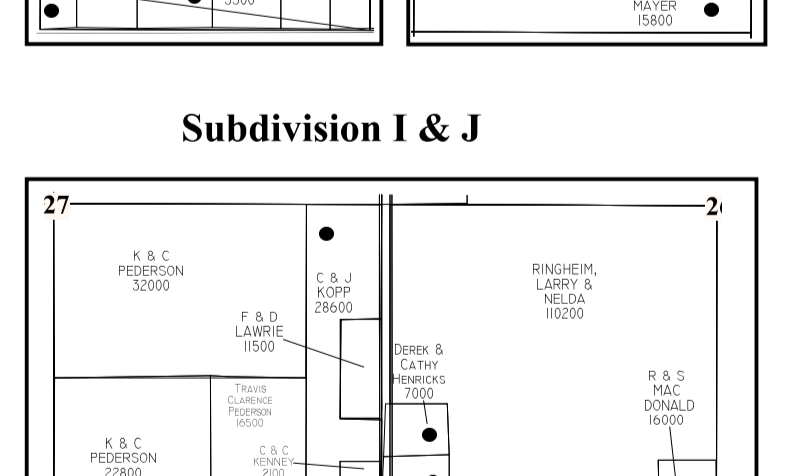
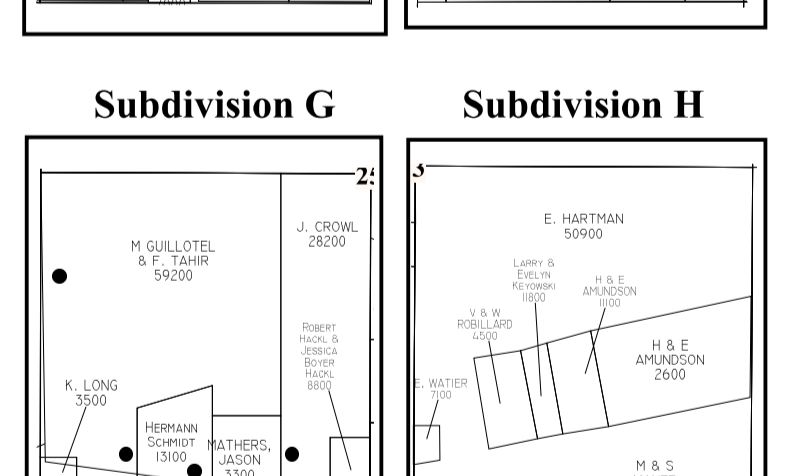
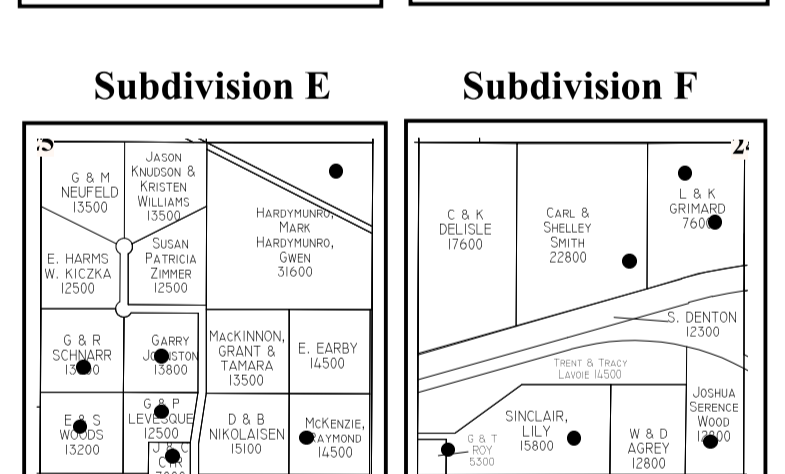
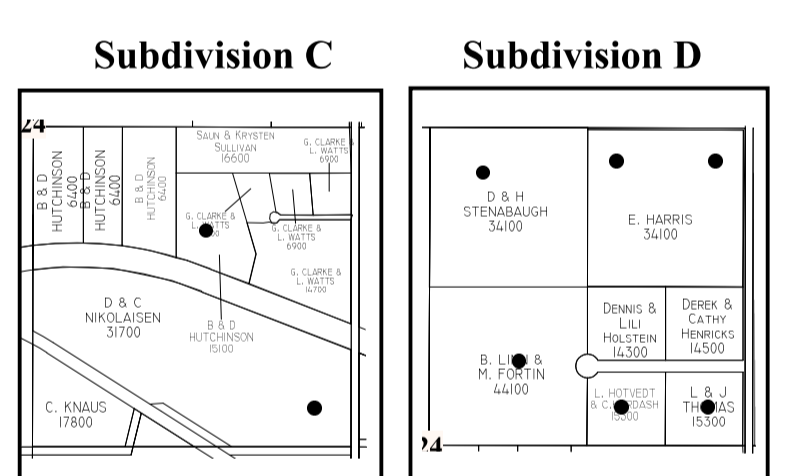
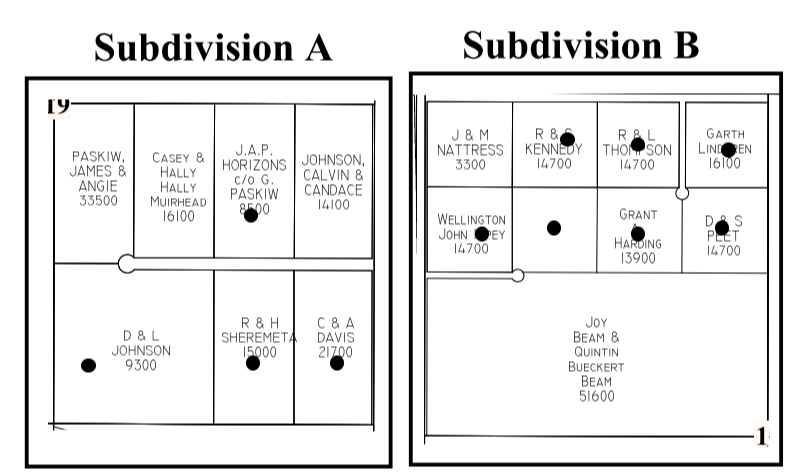
Administrator : Duane Storey
Box 250
Shellbrook, SK S0J 2E0
Ph: (306) 747-2178
www.rmofshellbrook.com

Members of Council

- Reeve: Doug Oleksyn
- Div. 1 : Cliff Skauge
- Div. 2 : Phil Hamel
- Div. 3 : Sean Helm
- Div. 4 : Jay Ferster
- Div. 5 : Derwin Joelson
- Div. 6 : Ron Herzog

Legend

- Provincial Highway
- Secondary Highways
- Grid Road
- Main Farm Access Road
- Permanently Restricted Road
- Designated Haul Road
- Railway
- Pipelines
- Waterbody
- Vegetation
- Watercourse
- Residence
- Waste Disposal Site
- Regional Park
- Cemetery/Church
- Hall
- Reserve Land
- Crown Landed Land
- Division Boundaries



This map has been produced by MuniSoft for the R.M. of Shellbrook No. 493 using information supplied by others. Geographical and topographic data (Copyright Her Majesty the Queen in Right of Canada) have been provided by Information Services Corporation and Subdivision data has been provided by the Municipality of Shellbrook. Application in whole or in part is prohibited. It is the responsibility of the user to verify the accuracy of the information since changes in assessment, ownership and other information may have changed since the time of printing. 04/06 Update April 2019

